

Netection Accelerator Installation Guide

Place the CD into your Cdrum tray after you get into Windows.

Double-Click on My Computer and find your Cdrum Drive, typically, it will be a Drive D:, E:, or an F:.

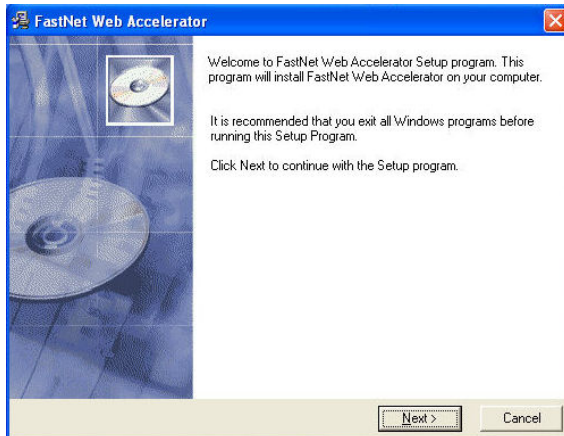
Once you Double-Click on your Cdrum Drive you should see a file called Accel_Setup.exe.

Double-Click on Accel_Setup.exe

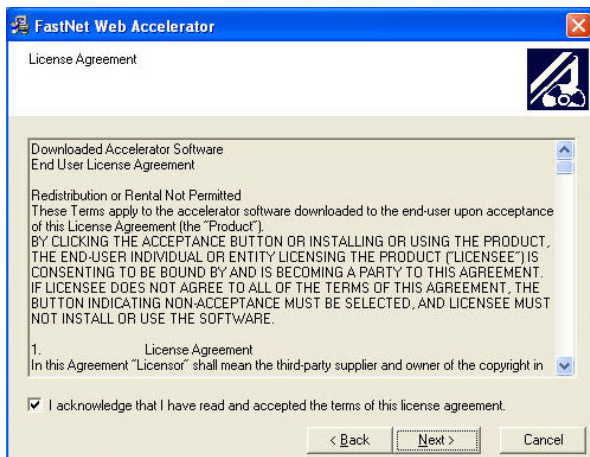
You should see this:



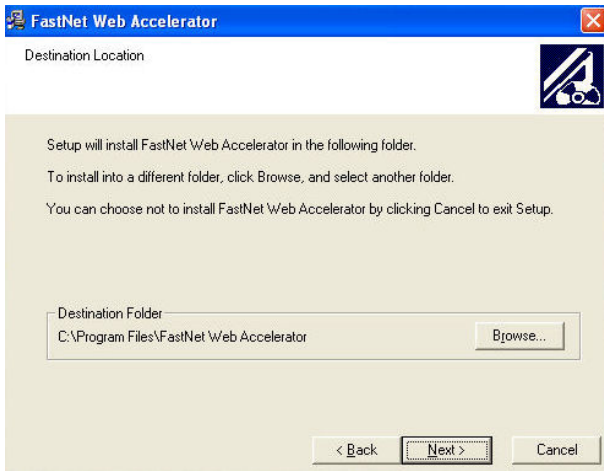
Click on Run



Click on Next

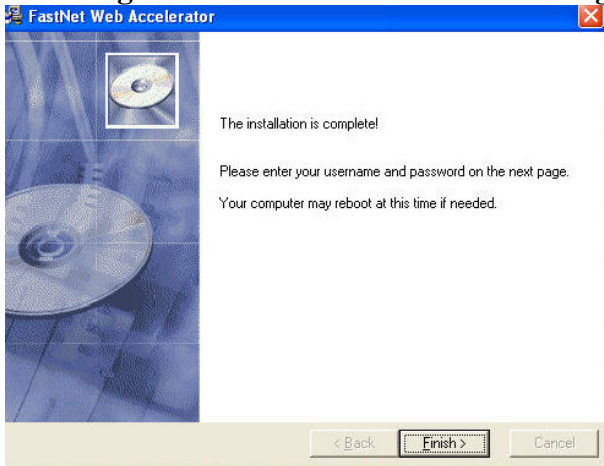


Put a Check in the Box then Click on Next



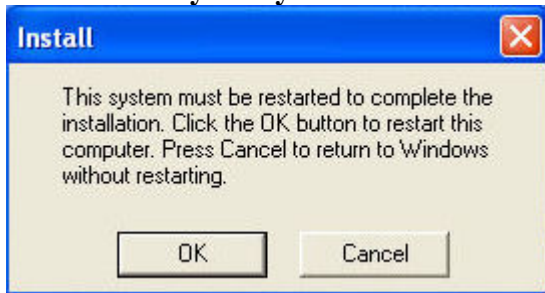
Go ahead and accept the Default placement settings and Click on Next

The Program will be installed and will bring up this box



Go ahead and Click on Finish.

It should ask you if you wish to Reboot. Go ahead and Click on OK to go ahead and reboot the computer.



Once the Computer Restarts you MIGHT be asked this question if you use Mozilla's FireFox instead of Netscape or Microsoft Internet Explorer or if you simply have them installed on your system.



If you use FireFox it is OK to go ahead and Click on Yes, otherwise No.

Once your system has been re-booted it will come up and ask for your username and password



If you do not put in youraccount@netection.net (For Example, bob4732@netection.net) you will see this picture, or if you possibly put in the wrong info



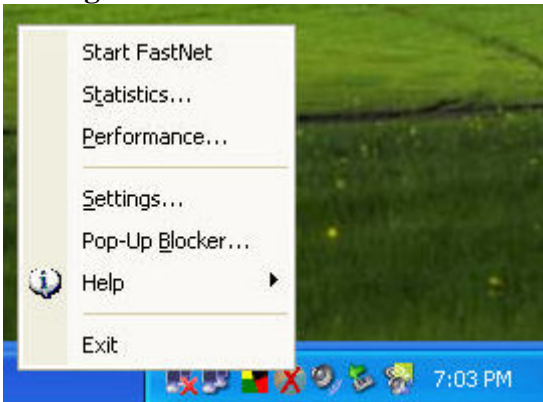
Once the program has finished installing you will see it come up in your system tray. This is what it will look like when it is enabled.



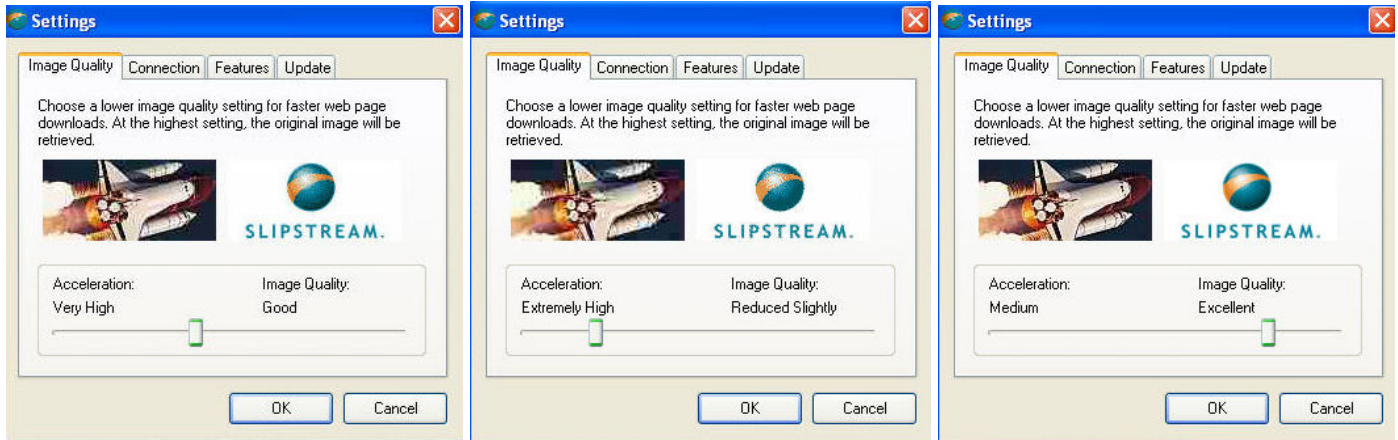
This is what it will look like when it is disabled. It will have a Red X through it.



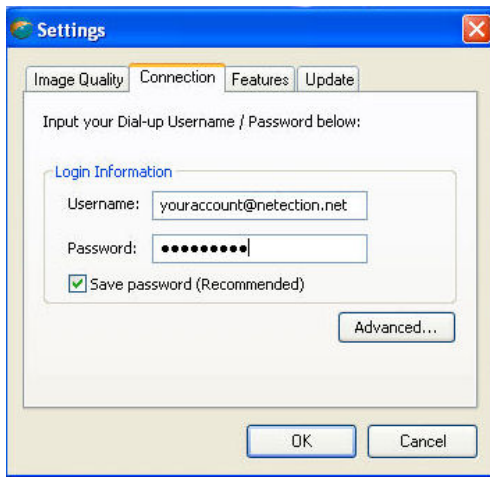
It automatically has default settings. If you wish to manipulate the configuration settings you can do a Right Click on the Icon down in the system tray and a menu will be Displayed. Go up and Click on Settings.



It will bring up the Settings box with the Default Settings. You can move the Slide Bar on the bottom Back and Forth to manipulate the Accelerator Settings.



If you accidentally put in the wrong username and/or password you can go into the connection tab and correct any mistakes.



The other two remaining tabs (Features and Update) I would highly recommend leaving at their default settings.

Also, there is a Pop-up Blocker feature as well, however, if you are currently using a pop-up blocker that came with one of your Toolbars, ie, the most popular being Google, Yahoo, AOL, etc... If you like the pop-up blocker feature on your current Toolbar then I would recommend turning this feature off. Too many pop-up blockers on at the same time does cause conflicts.

